

# ANEXO 6. ELEMENTOS PROPIOS DE CADA PAISAJE

ATLÁNTICO

ROBLE



CIPRÉS

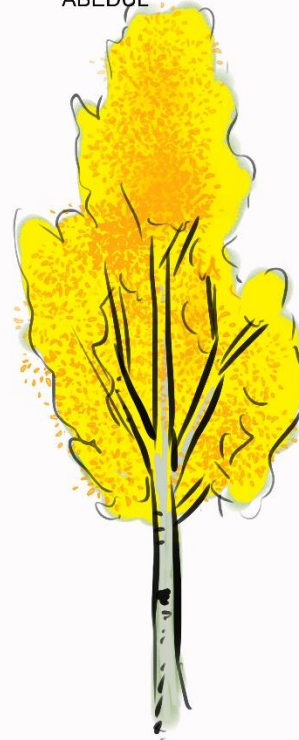


ATLÁNTICO

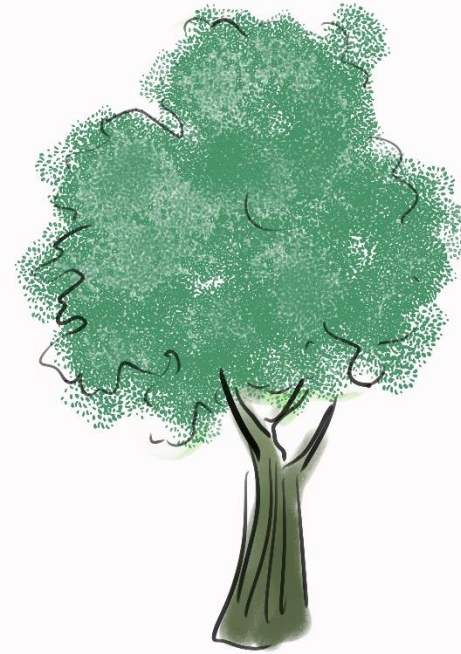
ABETO



ABEDUL



HAYA



CASTAÑO



PINCEA



HELECHO



ACEBO

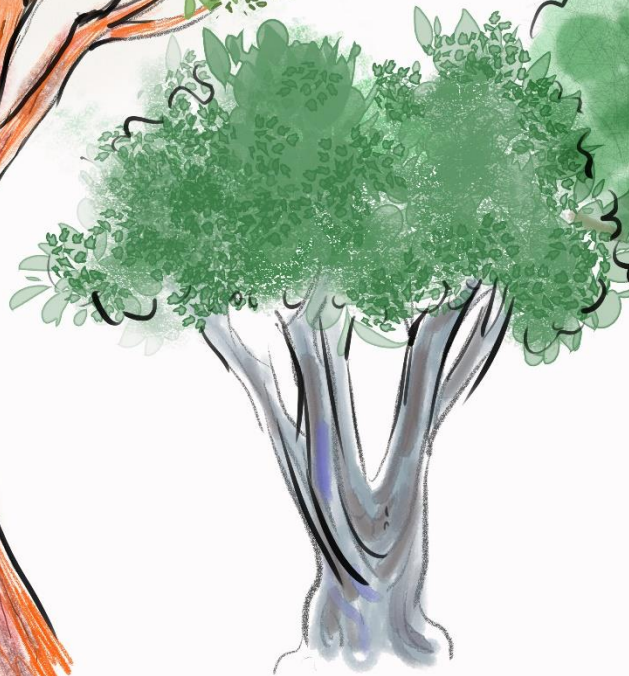




# MEDITERRÁNEO



PINO



OLIVO



ENCINA



ALMENDRO



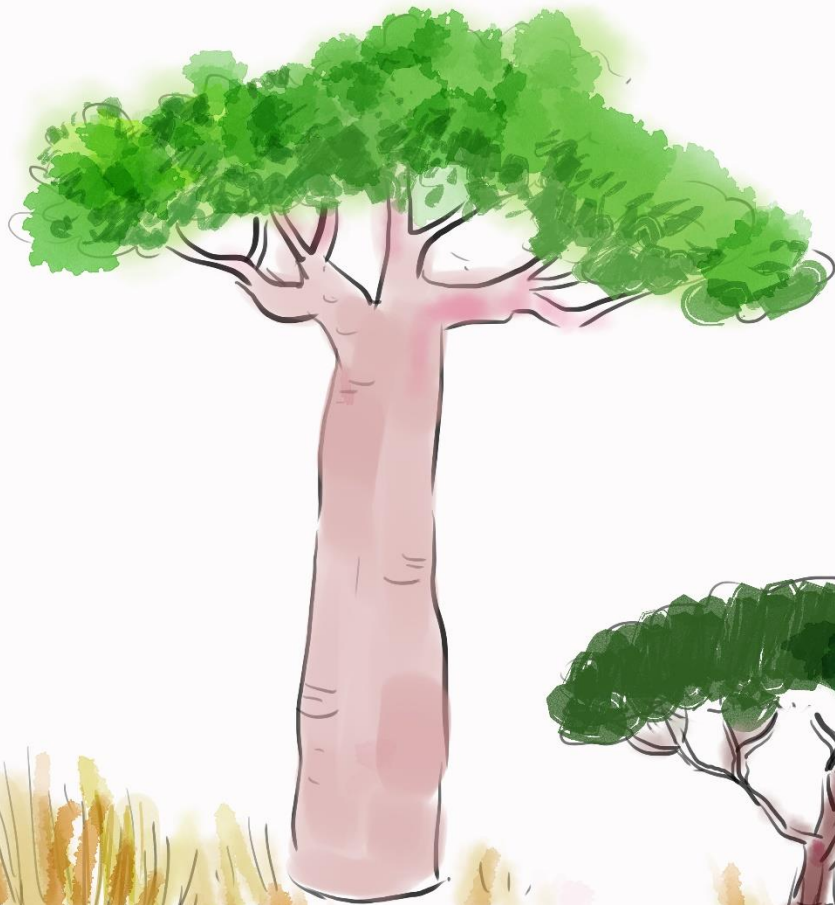
PALMERA



ADELFA

SABANA

# SABANA



BAOBAB



ACACIA



BAOBAB



ARBOL CANDELABRO



SELVA TROPICAL

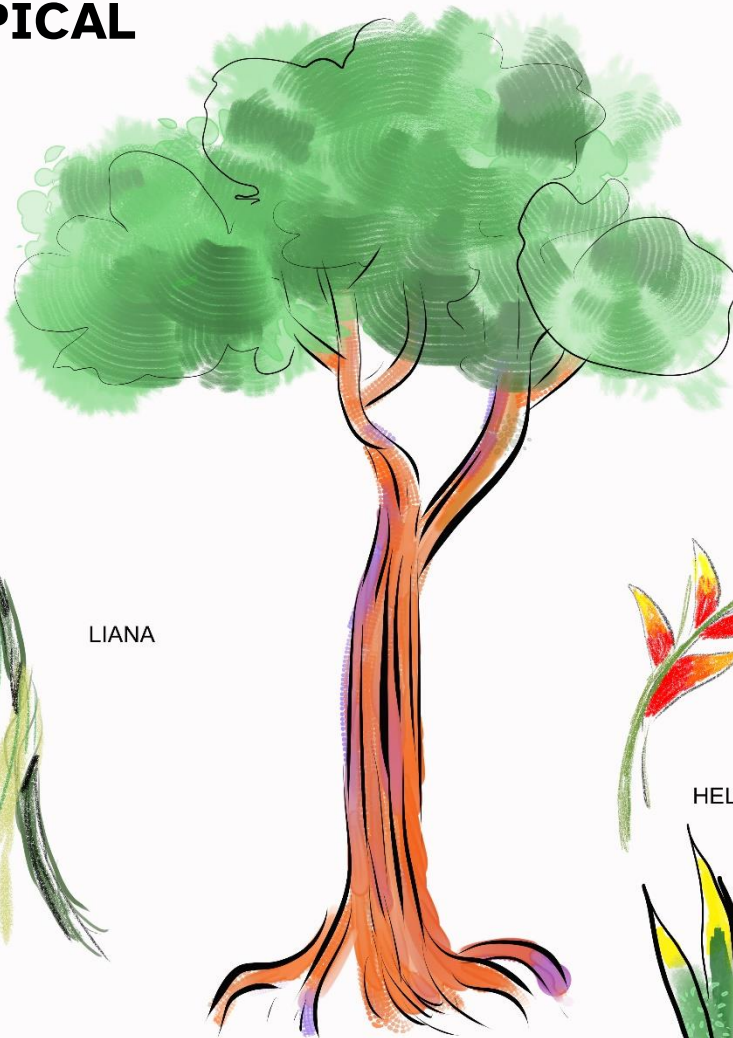
# SELVA TROPICAL



PALMERA



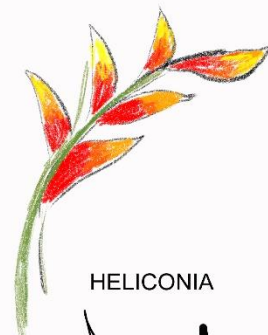
LIANA



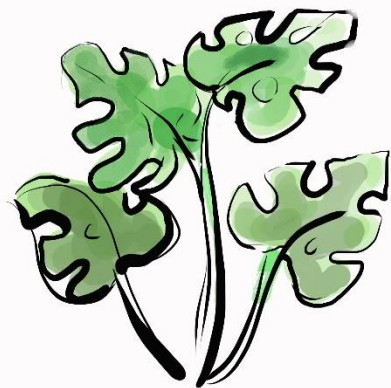
ÁRBOL DEL CAUCHO



ANTURIO



HELICONIA



MONSTERA



SANSEVERIA



PLANTAS EPIFITAS